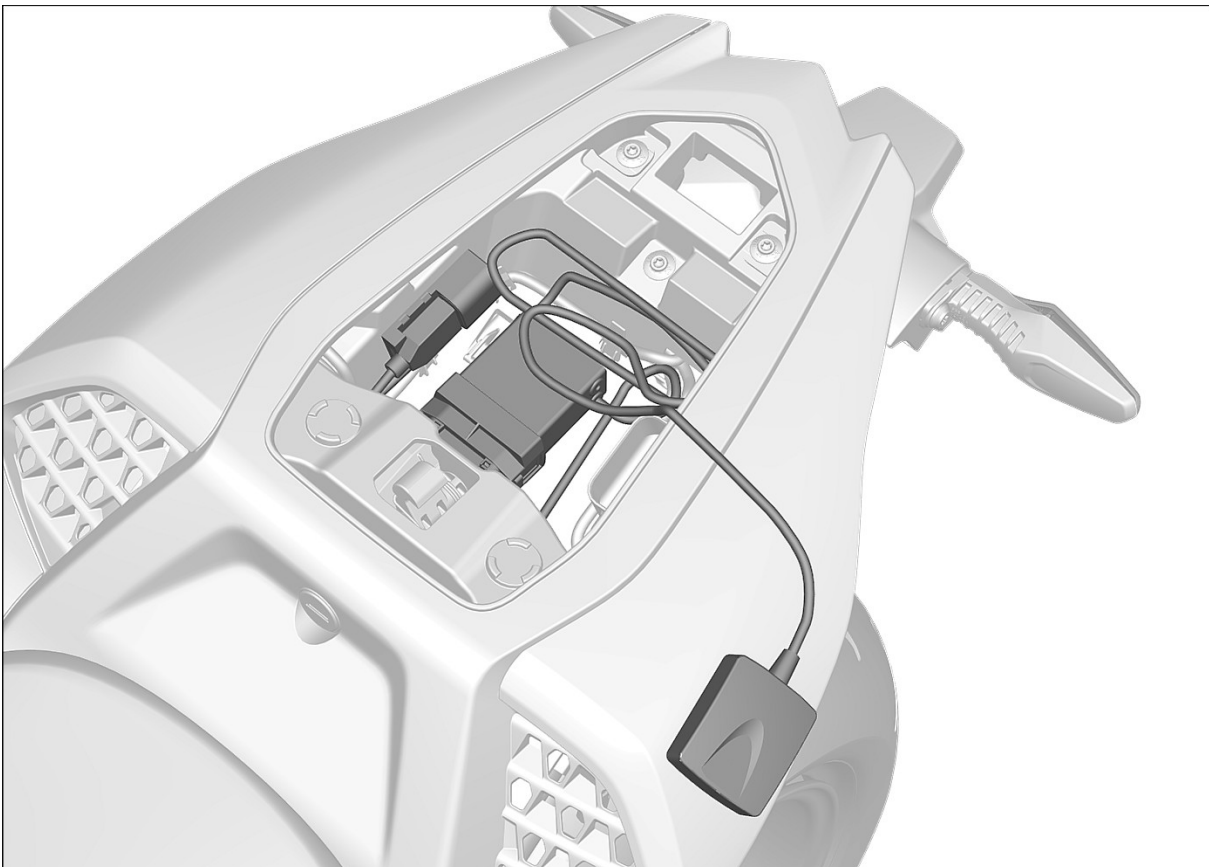


BMW Motorrad

Installation instructions

M data logger



Before commencing work, you must read these installation instructions through carefully and make sure you understand them fully.

We congratulate you on your choice of optional accessories from BMW Motorrad that will enable you to customise your motorcycle in accordance with your personal preferences.

Safety is invariably an essential prerequisite for extracting full benefit and enjoyment from new accessories. Some work calls for special tools and possibly a thorough knowledge of motorcycle technology. If you are in doubt consult a specialist workshop, preferably your authorised BMW Motorrad dealer.

Since we provide you with a multitude of accessories and optional equipment, we cannot cover all equipment specifications in these installation instructions. Therefore we restrict ourselves to the basic version of the corresponding model. The removal and installation of other possibly installed accessories is described in the corresponding installation instructions. Consult your authorised BMW Motorrad dealer if you no longer have access to the sets of instructions you need.

If you have questions concerning your motorcycle or any of the accessories from our range, your authorised BMW Motorrad dealer will gladly provide advice and assistance.

We at BMW Motorrad hope you will enjoy riding your BMW and that all your journeys will be pleasant and safe.

The symbols used to draw attention to precautionary statements in this manual are as follows:



CAUTION

Low-risk hazard. Non-avoidance can lead to slight or moderate injury.



WARNING

Medium-risk hazard. Non-avoidance can lead to fatal or severe injury.



DANGER

High-risk hazard. Non-avoidance leads to fatal or severe injury.



ATTENTION

Special notes and precautionary measures. Non-compliance can lead to damage to the vehicle or accessory and, consequently, to voiding of the warranty.



NOTICE

Specific instructions on how to operate, control, adjust or look after items of equipment on the motorcycle.



Tightening torque

Screws, bolts and nuts are tightened in accordance with the applicable DIN/ISO standards. Tightening torques that deviate from the standards are stated. Non-compliance can result in damage to the vehicle or accessories or can endanger the driver.

► Start of the main activity

▷ Start of the secondary activity

● Instruction

◄ End of the main activity

< End of the secondary activity

◇ End of validity designation CS (construction status), OE (optional extra) or OA (optional accessory)

© 2020 Bayerische Motoren Werke Aktiengesellschaft
80788 Munich, Germany

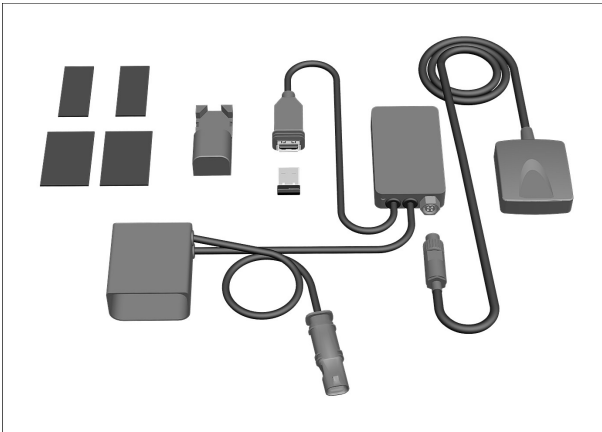
Not to be reproduced by any means whatsoever, wholly or in part, without the written permission of BMW Motorrad, After Sales.

Printed in Germany.

Subject to change without notice. Errors and omissions excepted.

All rights reserved.

M data logger



Delivery specification

- M Data logger kit

- without M GPS-Laptrigger^{OE} (018F)

Also required:

- enabling code◇

General instructions

ATTENTION

Vehicle not securely propped

Risk of damage to parts if vehicle topples

- Prop the vehicle securely.

WARNING

Children and pets in the working area

Injury to persons

- Keep children and pets away from the working area.

CAUTION

Wearing jewellery during work

Risk of injury by snagging or electrical short circuit

- Remove all items of personal jewellery (rings, chains, wristwatch, etc.) before starting work.

NOTICE

Once the retrofit kit has been installed by the workshop, these installation instructions must be handed over to the customer.

Make sure that these installation instructions accompany the retrofit kit when it is passed on to a third party.

77 52 015 Installing data logger

NOTICE

Ignition must be switched off for the installation of the data logger.

Additional work: 46 52 510 Removing and installing the rear-wheel stand special tool (motorcycles without centre stand)

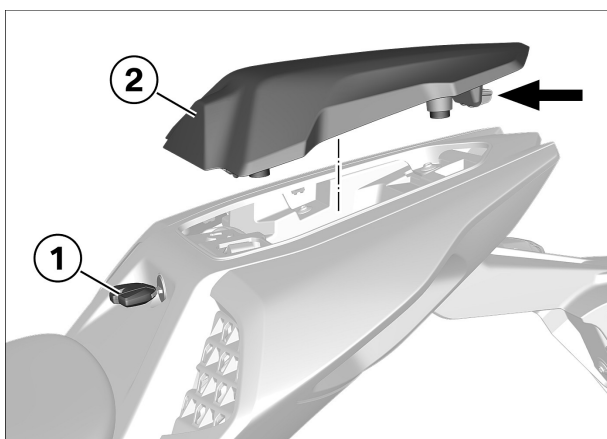
1

– without M GPS-Laptrigger^{OE} (018F)

► **Ordering enabling code for software update with ISTA/P**

- Order the requisite enabling code through BMW Parts Sales.◇

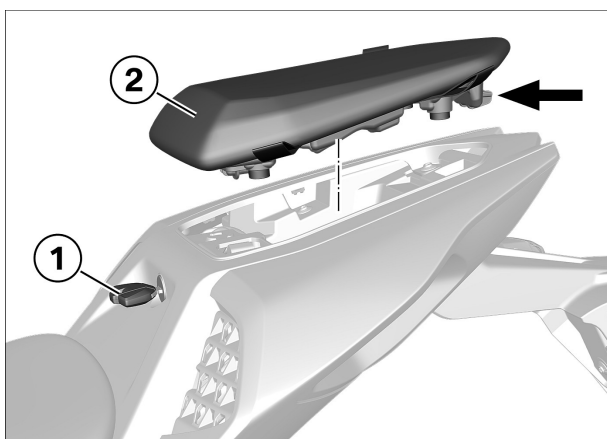
2



► **Removing tail-hump cover**

- Using an ignition key (1) unlock the lock for tail-hump cover (2).
- Remove tail-hump cover (2), to unhook the fixture (arrow).

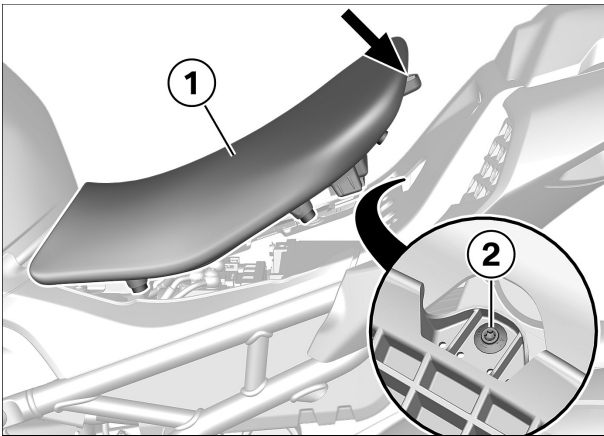
3



► **Removing passenger seat**

- with two-up riding package^{OE} (0413)
- Using an ignition key (1) unlock the lock for passenger seat (2).
- Remove passenger seat (2), to unhook the fixture (arrow).◇

4



► Removing rider's seat

- Push driver's seat **(1)** on the seat cushion surface (**arrow**) forwards.
- Loosen bolt **(2)**.
- Raise the driver's seat **(1)** at the rear and remove.



5

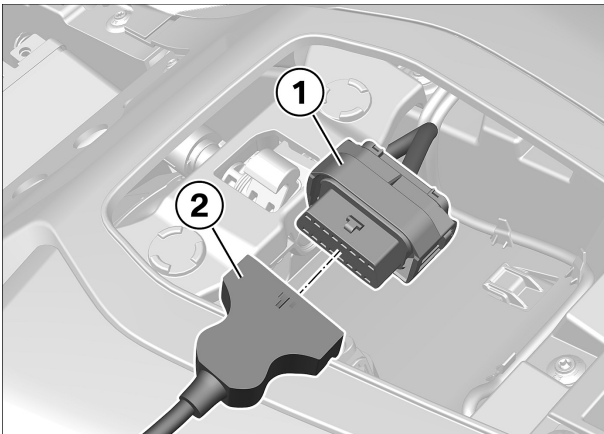
– without M GPS-Laptrigger^{OE} (018F)

► Connecting BMW Motorrad diagnostic system to vehicle

- Connect the BMW Motorrad battery charger.

NOTICE

When carrying out diagnosis and programming, use a battery charger with 30 A approved by BMW Motorrad that ensures an **on-board system voltage of 13 V**.



- Release diagnostic connector **(1)**.
- Connect connecting cable **(2)** of the BMW Motorrad diagnosis system to the diagnostic connector **(1)**.

NOTICE

See the information about the BMW Motorrad diagnostic system for all further instructions.◊



6

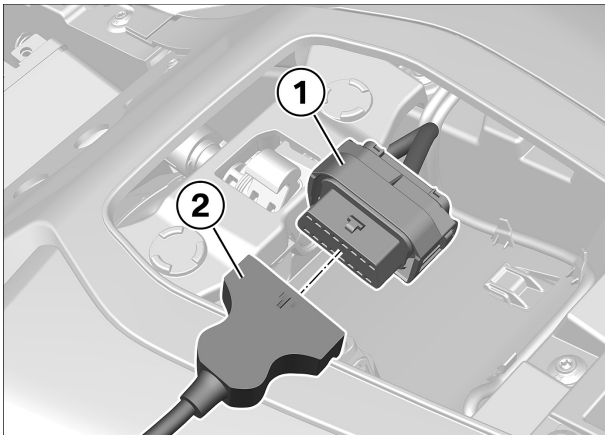
– without M GPS-Laptrigger^{OE} (018F)

► Programming vehicle control unit

- Start the programming routine and follow the instructions issued by the BMW Motorrad diagnostic system.◊



7



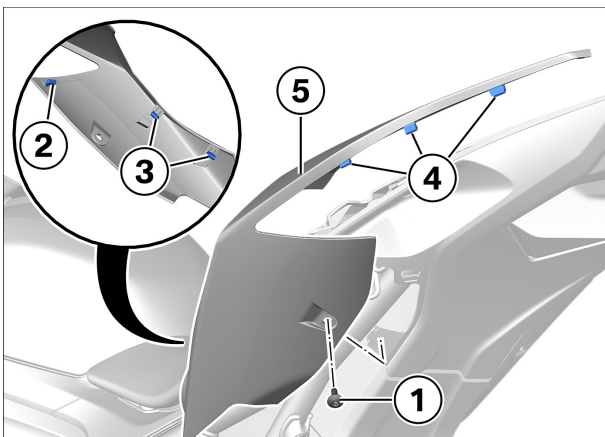
– without M GPS-Laptrigger^{OE} (018F)

► Disconnecting BMW Motorrad diagnostic system from vehicle

- Close all diagnostic programs and switch off the ignition.
- Disconnect connecting cable (2) of the BMW Motorrad diagnosis system from diagnostic connector (1).
- Secure diagnostic connector (1).
- Disconnect the BMW Motorrad battery charger from the vehicle.◇



8

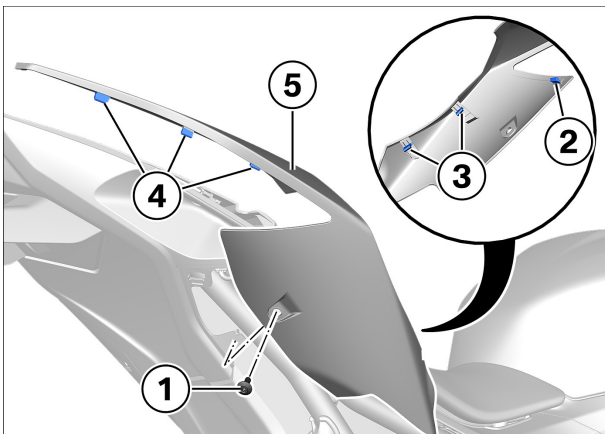


► Removing left rear trim panel

- Remove bolt (1).
- Release retaining lug (2), then retaining lugs (3) and finally retaining lugs (4) and remove rear trim panel (5).



9

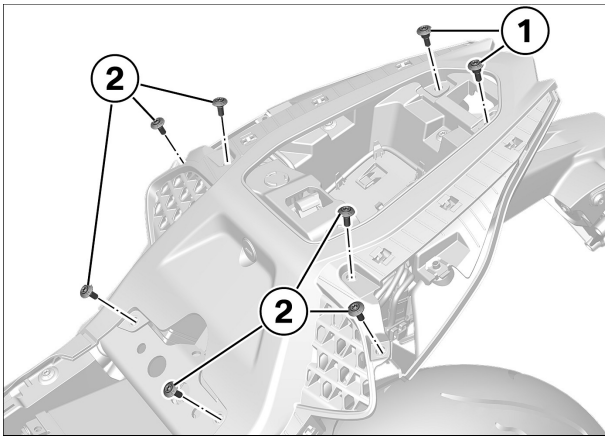


► Removing right rear trim panel

- Remove bolt (1).
- Release retaining lug (2), then retaining lugs (3) and finally retaining lugs (4) and remove rear trim panel (5).

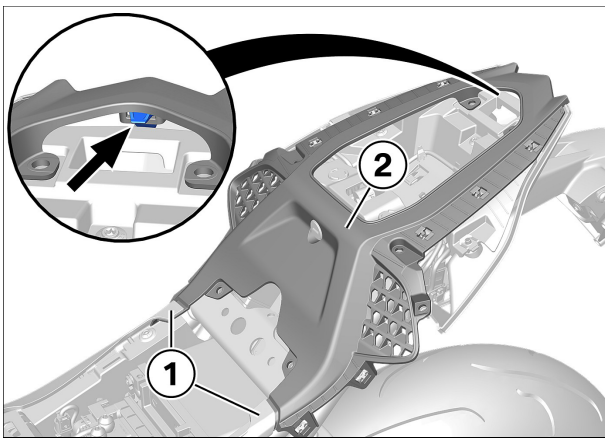


10



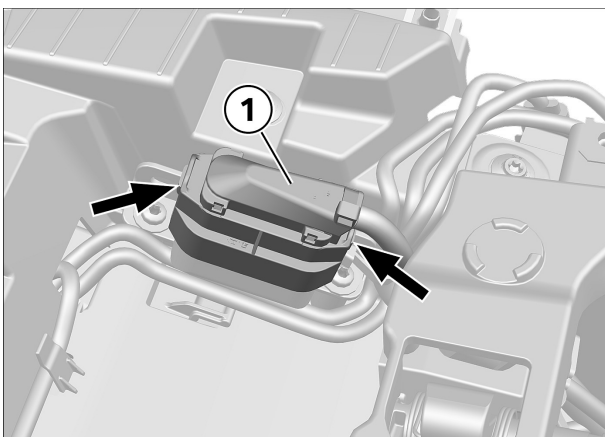
► Removing centre rear trim panel

- Remove screws **(1)** and **(2)**.



- Unclip tabs **(1)** from cover of fuel tank, bend slightly to the outside and release centre rear trim panel **(2)**.
- Slide centre rear trim panel **(2)** forwards and unhook lug **(arrow)**.
- Remove centre rear trim panel **(2)**.

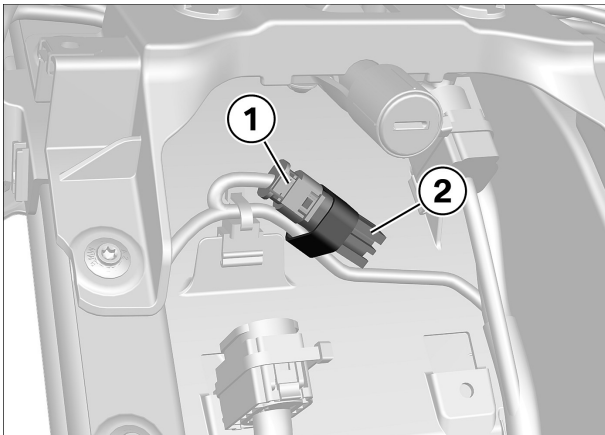
11



► Disconnecting diagnostic socket

- Press locks **(arrows)** and disconnect diagnostic socket **(1)**.

12



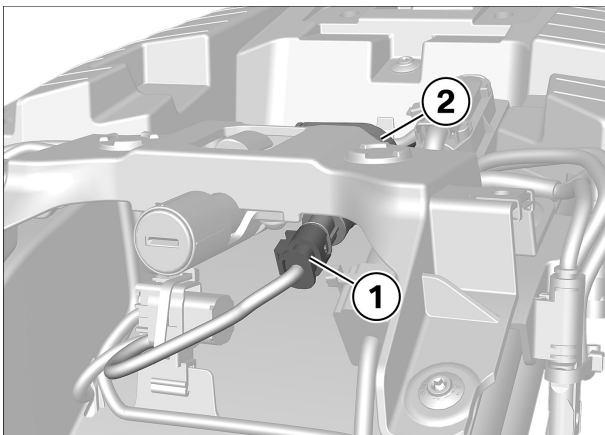
– without USB charging interface^{OE} (04U1)

► Exposing connector for power supply

- Disconnect connector (1) from blind cap (2).◇



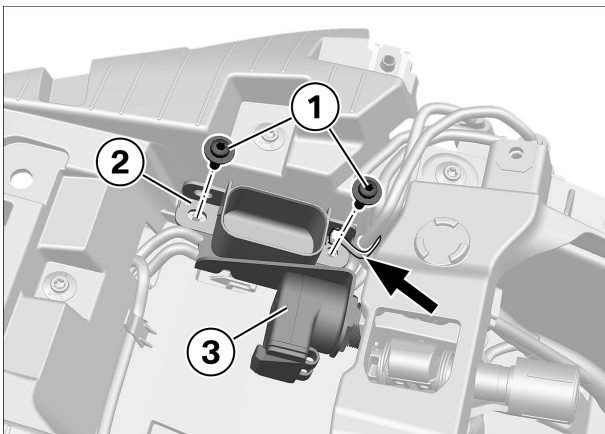
13



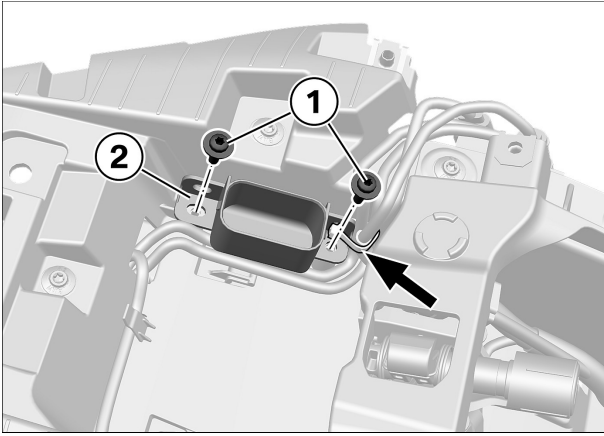
– with USB charging interface^{OE} (04U1)

► Removing USB charging socket

- Disconnect plug connection (1) from USB charging socket (2).



- Remove cable strap (arrow).
- Remove screws (1) and loosen holder (2) for diagnostic socket.
- Remove USB charging socket (3) with holder.



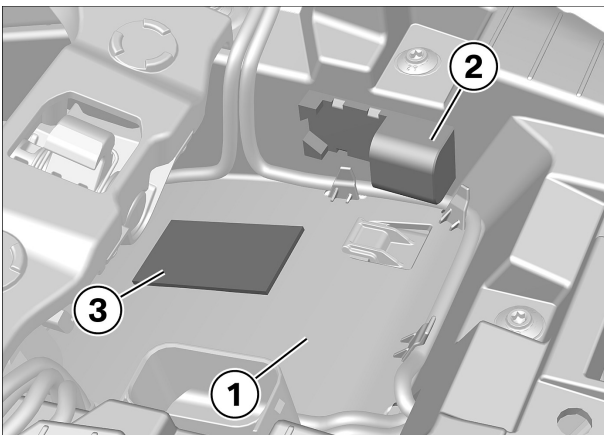
- Position holder **(2)** for diagnostic socket and install screws **(1)**.
- Secure the cable strap **(arrow)**.◇

14

► Preparing storage compartment

NOTICE

Faces that will be in contact with the adhesive must be dry, clean and free from dust and grease.



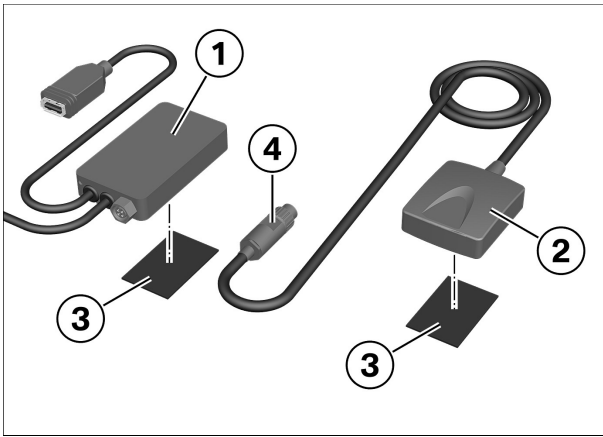
- Clean bonding points on storage compartment **(1)**.
- Attach holder for USB port **(2)**.
- Attach hook and loop tape **(3)**.

15

► Preparing data logger

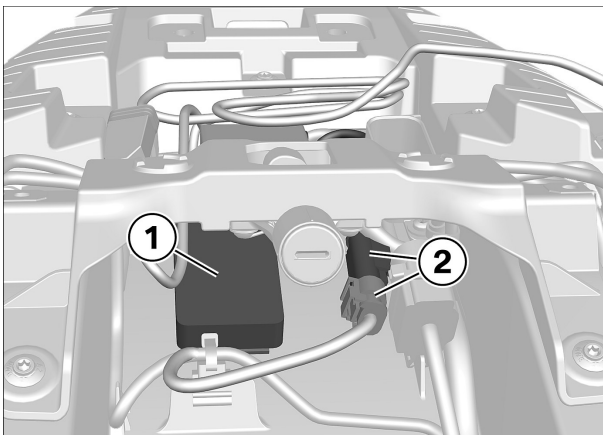
NOTICE

Faces that will be in contact with the adhesive must be dry, clean and free from dust and grease.



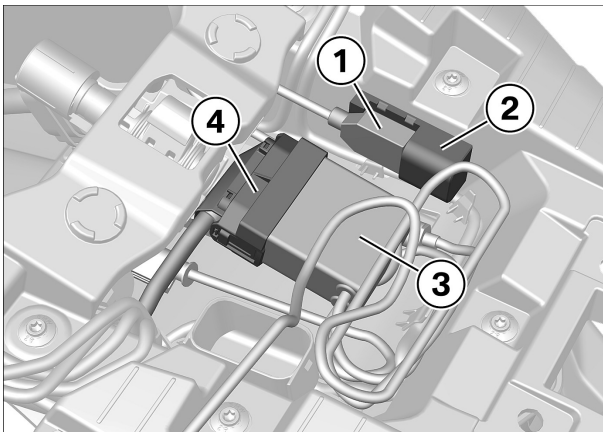
- Clean rear side of data logger **(1)** and GPS receiver **(2)**.
- Attach hook and loop tape **(3)** on data logger **(1)** and GPS receiver **(2)**.
- Insert connector **(4)** of GPS receiver **(2)** in data logger **(1)**.

16

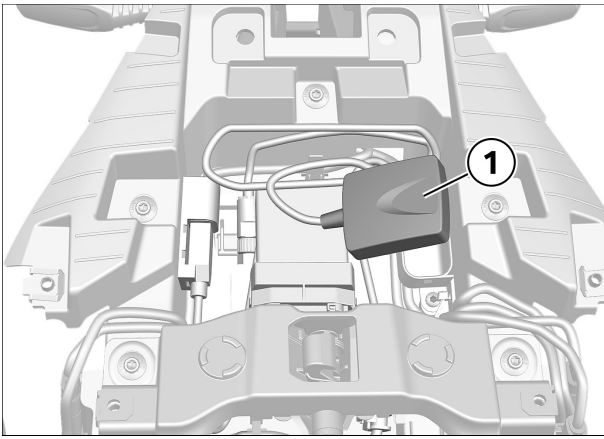


► Installing data logger

- Secure data logger **(1)** on glued in hook and loop tape.
- Connect plug connection **(2)** for power supply.

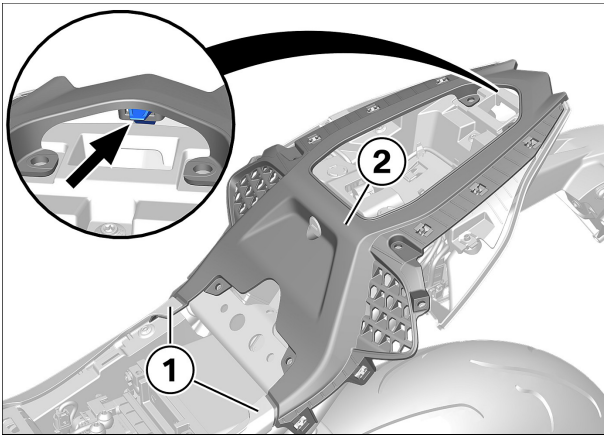


- Secure USB port **(1)** in glued in holder **(2)**.
- Connect plug connection **(3)** to diagnostic socket **(4)** and position in storage compartment.



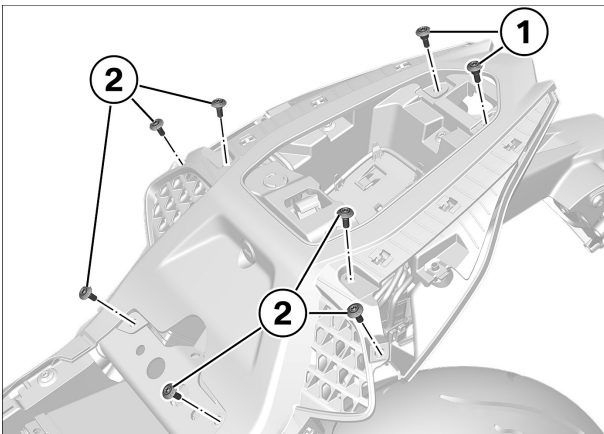
- Store GPS receiver **(1)** temporarily in the storage compartment.

17



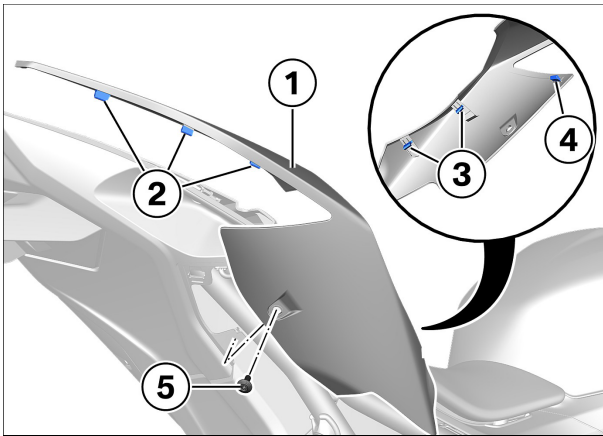
► Installing centre rear trim panel

- Place centre rear trim panel **(2)** in position and hook in lug **(arrow)**.
- Bend tabs **(1)** of cover of fuel tank slightly to the outside and install centre rear trim panel **(2)**.
- Clip in tabs **(1)** of cover of fuel tank.



- Install screws (3 mm collar) **(2)**.
- Install screws (6 mm collar) **(1)**.

18

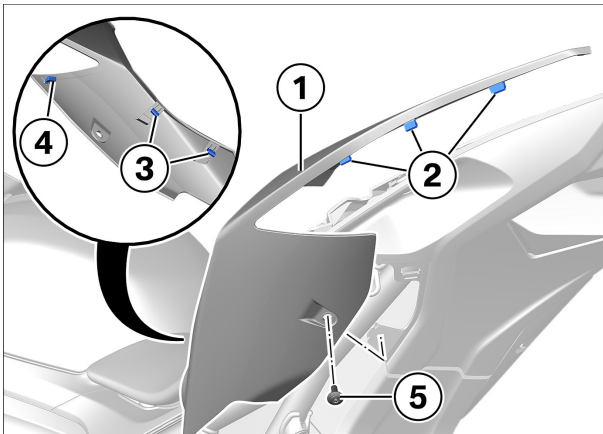


► Installing right rear trim panel

- Position rear trim panel (1) with retaining lugs (2) and engage. Next, engage retaining lugs (3) and retaining lug (4) last.
- Install bolt (5).



19



► Installing left rear trim panel

- Position rear trim panel (1) with retaining lugs (2) and engage. Next, engage retaining lugs (3) and retaining lug (4) last.
- Install bolt (5).

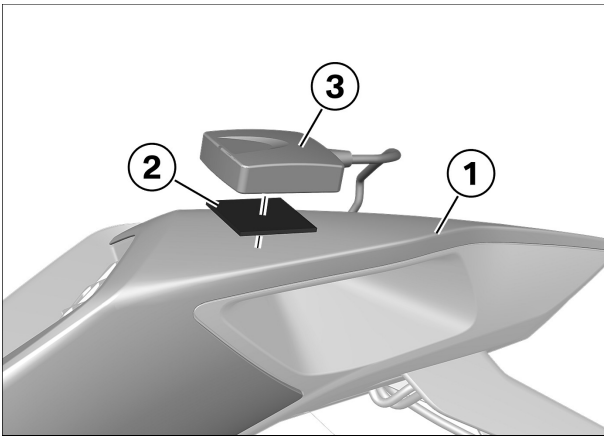


20

► Securing GPS receiver

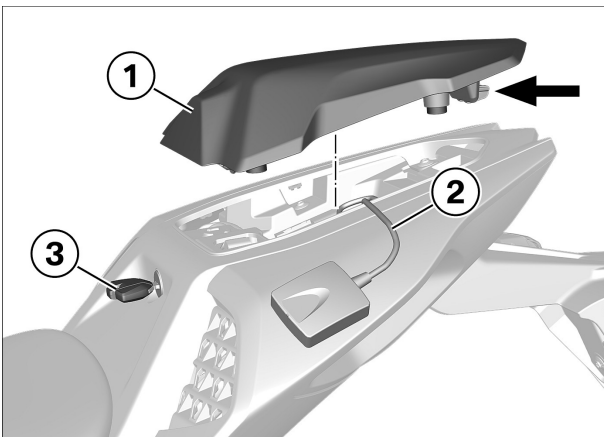
NOTICE

Faces that will be in contact with the adhesive must be dry, clean and free from dust and grease.



- Clean bonding surface on tail section **(1)**.
- Attach hook and loop tape **(2)**.
- Secure GPS receiver **(3)**.

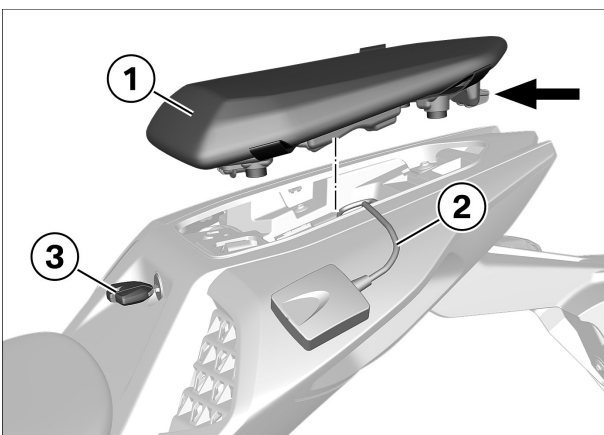
21



► Installing tail-hump cover

- Position tail-hump cover **(1)** and attach fixture **(arrow)**.
- Push tail-hump cover **(1)** down, noting cable **(2)** of GPS receiver.
- Lock with ignition key **(3)**.

22

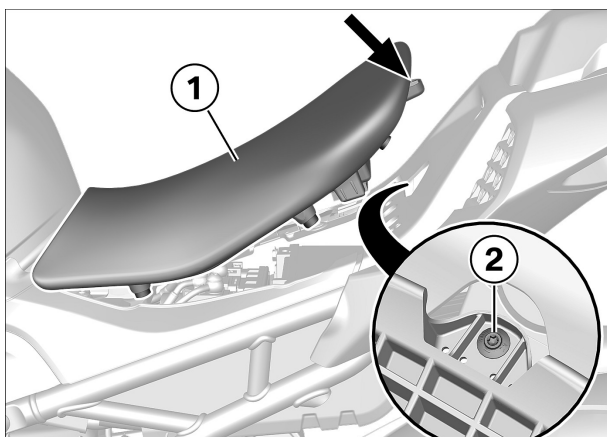


► Installing passenger seat

– with two-up riding package^{OE} (0413)

- Position passenger seat **(1)** and attach fixture **(arrow)**.
- Push passenger seat **(1)** down, noting cable **(2)** of GPS receiver.
- Lock with ignition key **(3)**.◇

23



► Installing rider's seat

- Insert driver's seat **(1)** at front and position.
- Press driver's seat **(1)** to the front at the seat cushion surface **(arrow)**.
- Position bolt **(2)** and install.

24

► Final check of work performed

- Check the following:
 - The work as performed achieved the intended purpose.
 - All reservoirs and containers have been filled and all fluids and lubricants are at their correct levels.
 - All threaded fasteners released beforehand have been correctly retightened.
 - The fuel system is free of leaks.
 - The lights and signalling equipment are fully operational and the vehicle is roadworthy.
 - The brake pads of the front and rear brakes are bedded against the brake discs.

▷ Function test, engine start suppression

Check

- Set kill switch to "ON" position.
- Select neutral.
 - » Neutral indicator light "N" lights up.
- Select a gear.
 - » Neutral indicator light "N" goes out.
- Press the starter button.
 - » Starter does **not** operate.
- Extend the side stand.
 - » Starter does **not** operate.
- Pull the clutch lever.
 - » Starter does **not** operate.
- Retract the side stand.
 - » Starter does **not** operate.
- Press the starter button without releasing the clutch lever.
 - » Starter operates.

Result

Not all test steps completed successfully.

Measure

- Check the appropriate parts with the BMW Motorrad diagnostic system.

